

# *Lessons Learned in GSI Maintenance*

December 4, 2025





# *Meet Your Hosts*



**April  
Mendez**

CEO,  
GREENPRINT PARTNERS



**Hannah  
Kacprzak, PE**

SENIOR PROJECT MANAGER,  
GREENPRINT PARTNERS



**Aaron  
Kirkland**

OPERATIONS SUPERINTENDENT,  
PHILADELPHIA WATER  
DEPARTMENT



# *Learning Objectives*

- Key challenges in maintaining GSI
- How to integrate maintenance considerations into the design phase
- Strategies for building staff and contractor capacity and managing workforce development
- How to manage a programmatic level maintenance program





**Where is your agency on the GSI implementation journey?**



The background of the slide is a photograph of a garden. In the foreground, there is a brick path made of grey rectangular bricks. To the left of the path is a raised garden bed with a reddish-brown border, filled with various green plants and some pink flowers. In the background, there are more potted plants, some with pink flowers, and a silver car parked on a street. The overall scene is bright and sunny.

# *Perspectives: PWD's Internal Workforce Model*



## Grounds Maintenance Series

### PWD Vegetated System

#### 76 Different Plant Species

- 41 of those species germinated from the seed mix
- Counts do not include weeds

### PPR Lawn Area

#### 3-5 Intended Species

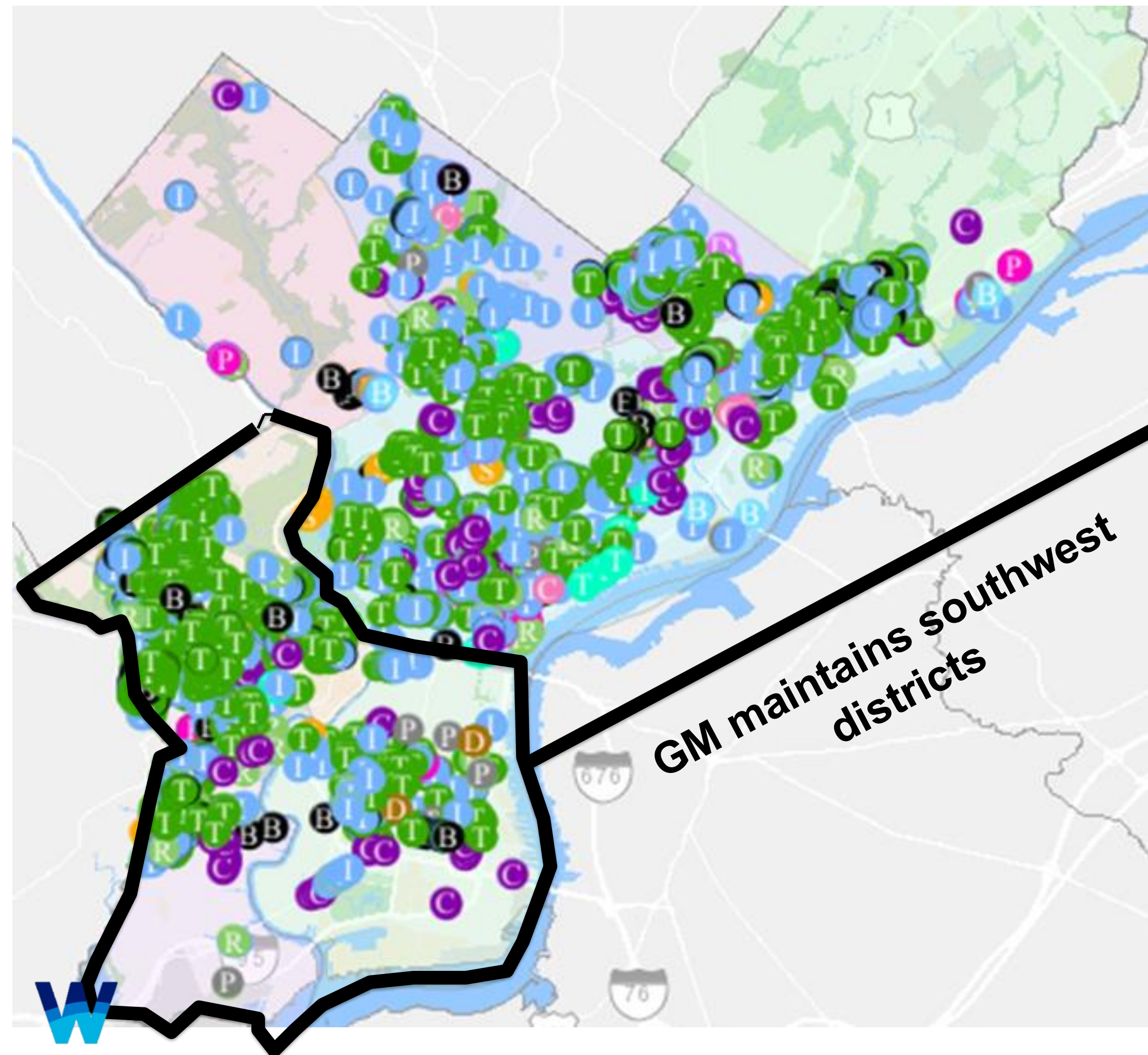
- Counts do not include weeds

Maintenance strategies differs by plant type and location  
General Practices: weeding - around, among and between intended plants, pruning, rejuvenation pruning, cutbacks, edging, mulching, watering

Maintenance strategies do not differ by grass type  
General Practices: mowing, string trimming

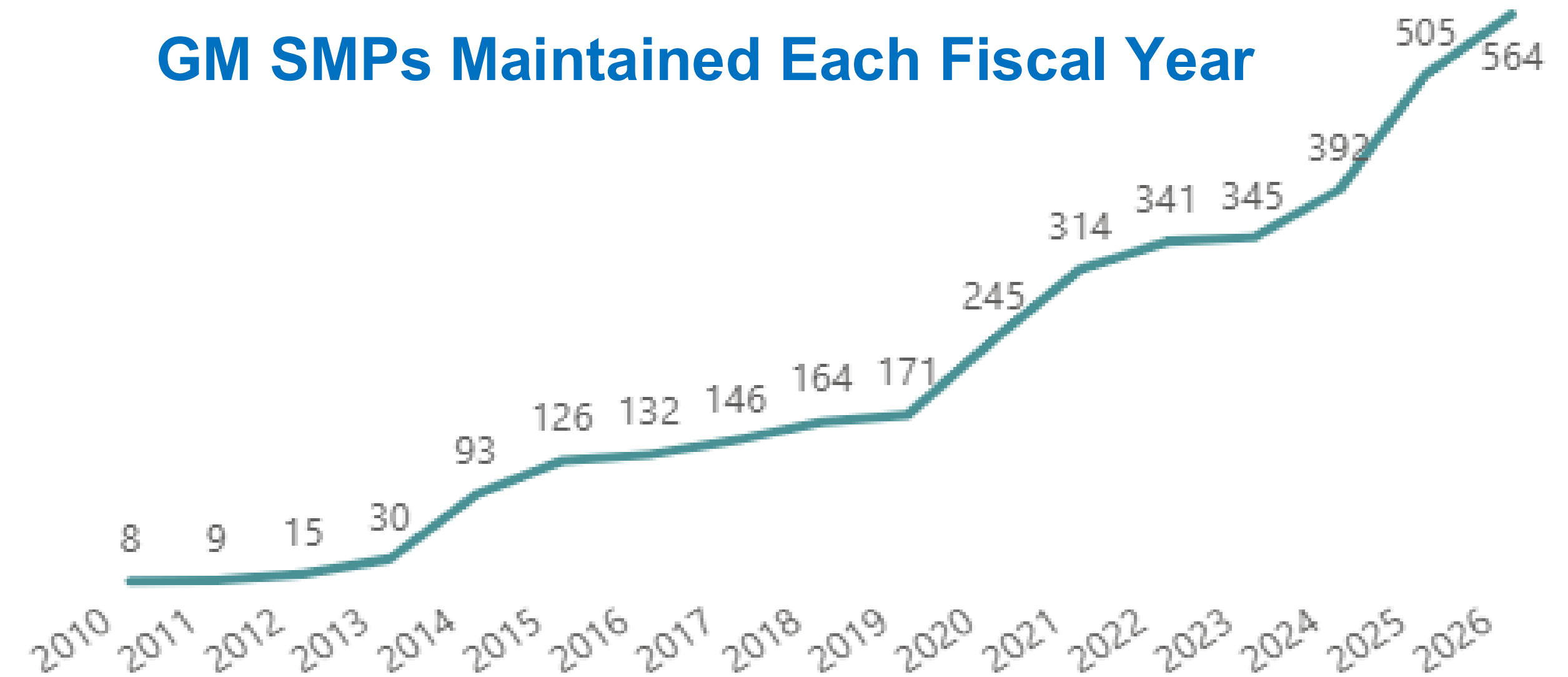


> **2,000 SMPs** Maintained Citywide



# PWD Grounds Maintenance

## GM SMPs Maintained Each Fiscal Year



tree trenches

rain gardens

planters

stormwater trees



bumpouts

swales

green roofs



# Apprenticeship Program

Provides apprentices with:

- On-the-job training
- Mentorship
- Classroom instruction



## Investing in Staff to Build Skills

### Certifications & Programs

- Clean Water Certificate Program
- Pesticide Usage
- CityWorks

### Field & Maintenance

- Plant Identification
- Planting/Mulching
- Structural Repairs
- Erosion Control
- Wetland Maintenance
- Hydrants

### Inspection & Planning

- Surveying
- Inspections
- Landscape Plans





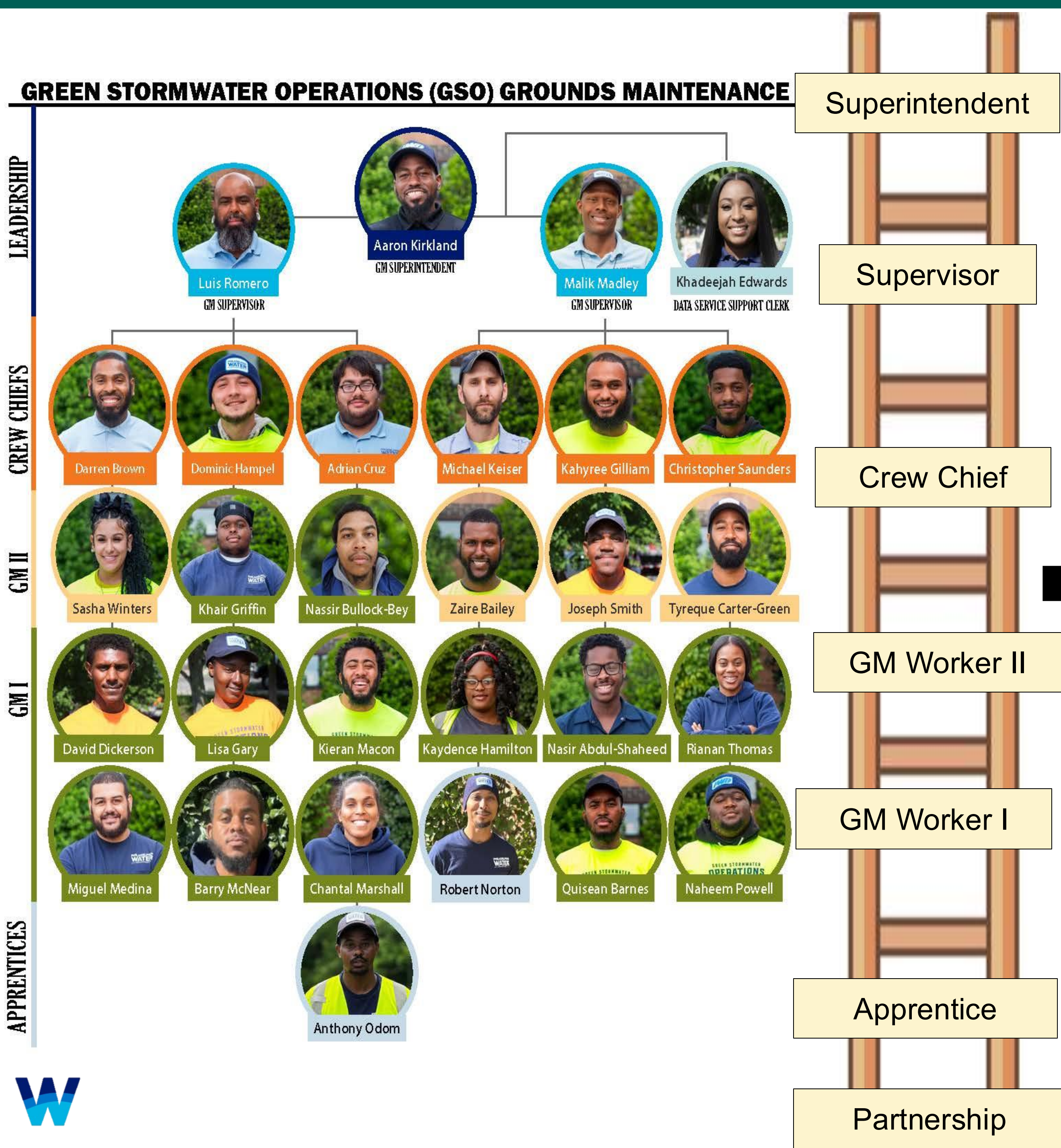


6,278

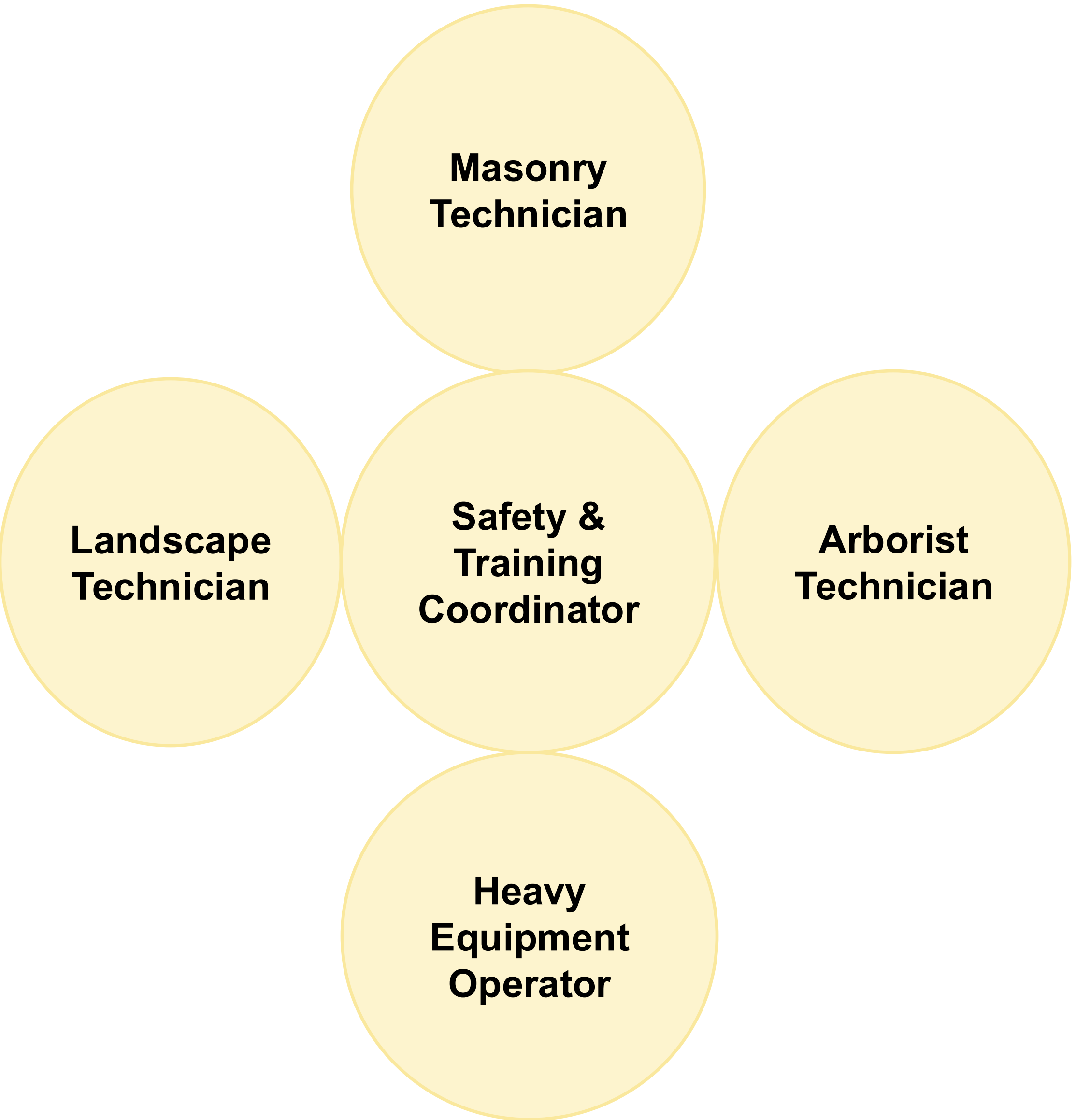
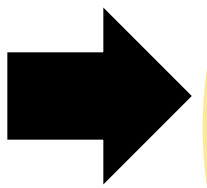
Work Orders Completed  
by GM in FY 2025







# Future GSO Specializations





A close-up photograph of several pink coneflowers (Echinacea) with vibrant red-orange centers. The flowers are in various stages of bloom, with some fully open and others partially visible. The background is a soft, out-of-focus green, suggesting foliage. The overall lighting is bright and natural, highlighting the delicate texture of the petals and the intricate detail of the flower heads.

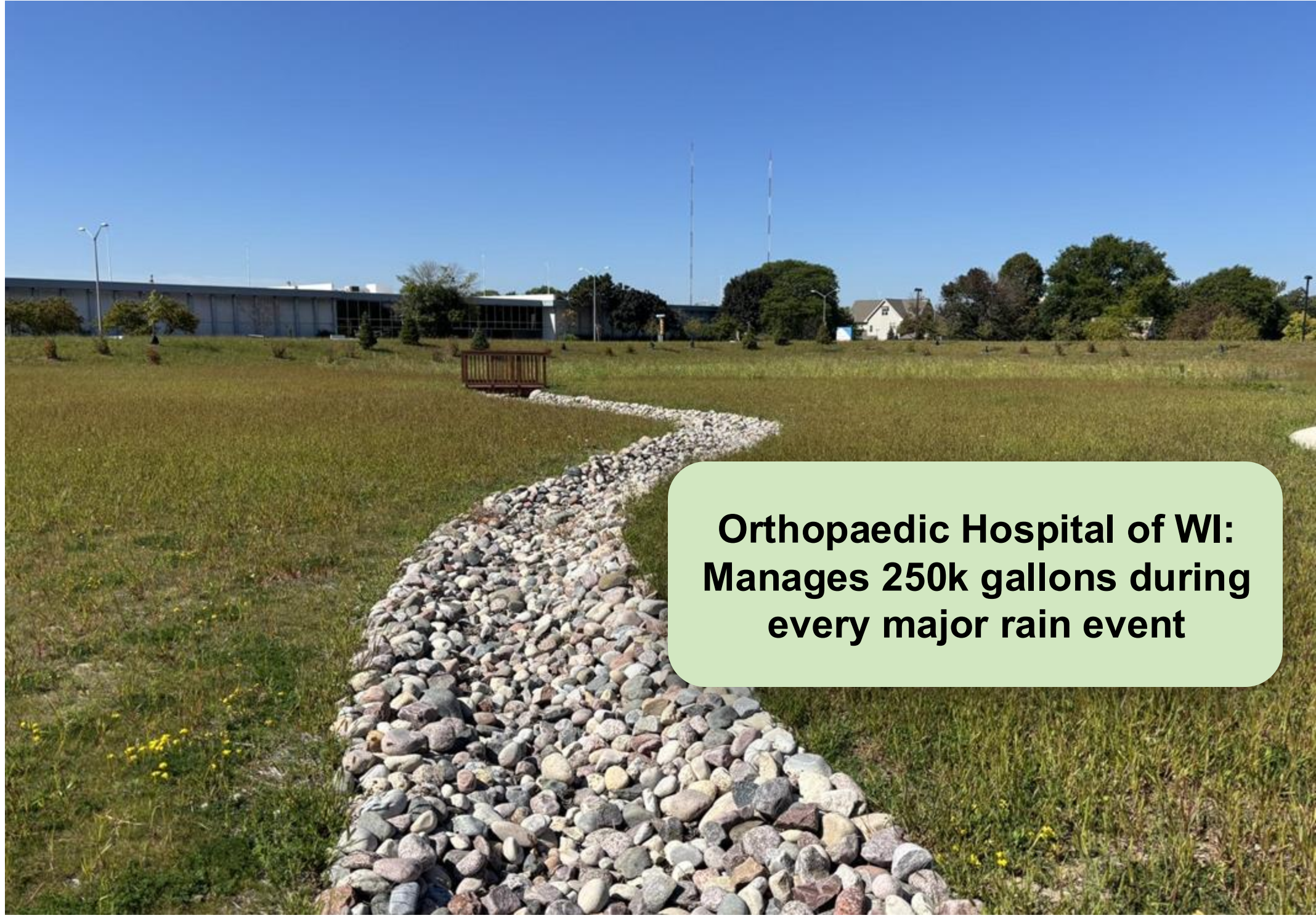
# *Perspectives: Greenprint's Programmatic Model*



# *Fresh Coast Green Communities Program*



**Melvina Park: Manages 240k gallons during every major rain event**



**Orthopaedic Hospital of WI: Manages 250k gallons during every major rain event**



**Milwaukee Sign Language and Morse Middle School: Manages 770k gallons during every major rain event**



# *Considering maintenance throughout the life of a project*

Best practices from Fresh Coast Green Communities:



**Meet landowners  
where they're at**



**Hire a landscaping  
contractor for  
design reviews**



**Publicly bid  
maintenance with a  
pathway for more  
firms**



**Conduct regular  
site inspections**



**Train property  
owner at handoff**



Q+A







**What questions do you have for us?**



THANK YOU!

*Contact us:*



[amendez@greenprintpartners.com](mailto:amendez@greenprintpartners.com)

[hkacprzak@greenprintpartners.com](mailto:hkacprzak@greenprintpartners.com)



[Aaron.Kirkland@phila.gov](mailto:Aaron.Kirkland@phila.gov)