



**CAPACITY**  
**COLLABORATIVE**

# **Crafting Powerful Logic Models for Project Success**



# Cynthia Naha, Senior Associate

Hello, my name is Cynthia Naha, I am enrolled member of the Hopi Tribe and is Tewa and Ihanktoan Dakota Oyate and currently reside in my traditional homes of my Tewa people, here in Santa Fe, NM.

Over the past 20 years, I have worked in the Environmental Protection and Natural Resources field for several different Tribes and Pueblos located in Arizona, California, and New Mexico. Currently, I am the Director the Environment Department for Picuris Pueblo and the former Director of the Natural Resources Department for Santo Domingo Pueblo, both are federally recognized tribes in NM.

I also work with the American Indian Higher Education Consortium (AIHEC)/Southwest Climate Adaptation Science Center (SW CASC) as a Senior Tribal Climate Resilience Liaison.



**A lot of information:  
add your questions  
to the Q&A dialogue  
box in GoToWebinar**





# What is the Logic Model

It can be applied to any project or proposal you are working on or applying for funding for.

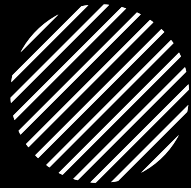
## Outputs

The tangible or direct result of a process, task or activity.

## Outcome

The long-term effects of a process, task or activity. May not be directly observable.

# Categories of a Logic Model

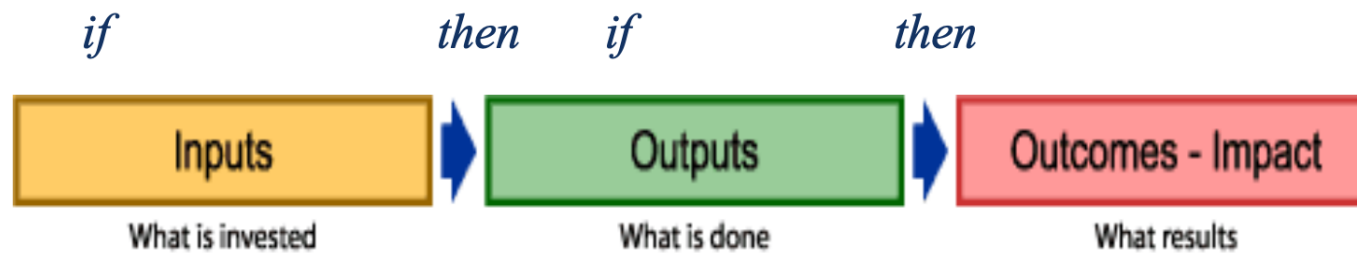


- Resources
- Activities
- Outputs
- Audience
- Short-term Outcome
- Intermediate Outcome
- Long-term Outcome



Resources	Activities	Outputs	Audience	Short-Term Outcomes	Intermediate Outcomes	Long-Term Outcomes
<p><i>What you invest!</i></p> <ul style="list-style-type: none"> <li>•Time</li> <li>•Money</li> <li>•Partners</li> <li>•Equipment</li> <li>•Facilities</li> </ul>	<p><i>What you do!</i></p> <ul style="list-style-type: none"> <li>•Plan</li> <li>•Meet</li> <li>•Educate</li> <li>•Create</li> <li>•Clean up</li> </ul>	<p><i>What you produce or deliver! (#)</i></p> <ul style="list-style-type: none"> <li>•Workshops</li> <li>•Events</li> <li>•Publications</li> <li>•Resident involvement</li> </ul>	<p><i>Who you reach!</i></p> <ul style="list-style-type: none"> <li>•Customers</li> <li>•Participants</li> <li>•Decision-makers</li> </ul>	<p><i>Change in:</i></p> <ul style="list-style-type: none"> <li>•Knowledge</li> <li>•Skills</li> <li>•Attitude</li> <li>•Awareness</li> <li>•Motivation</li> </ul>	<p><i>Change in:</i></p> <ul style="list-style-type: none"> <li>•Behaviors</li> <li>•Practices</li> <li>•Procedures</li> </ul>	<p><i>Change in:</i></p> <ul style="list-style-type: none"> <li>•Environment</li> <li>•Social conditions</li> <li>•Economic conditions</li> <li>•Policies</li> </ul>

**Logical Flow (below):**



**AGENCY:** ENVIRONMENTAL PROTECTION AGENCY (EPA)  
**TITLE:** SOLID WASTE INFRASTRUCTURE FOR RECYCLING (SWIFR)  
GRANTS FOR TRIBES AND INTERTRIBAL CONSORTIA

**ACTION:** Request for Applications (RFA)

**FUNDING OPPORTUNITY NUMBER:** EPA-I-OLEM-ORCR-23-07

**Assistance Listing No:** 66.920

**KEY DATES:**

**Jan. 4, 2023** RFA OPENS  
**Jan. 19 and 25, 2023** INFORMATION SESSION SERIES #1  
**Feb. 1 and 7, 2023** INFORMATION SESSION SERIES #2  
**April 4, 2023** RFA CLOSES – APPLICATIONS DUE BY 11:59 PM (EDT)  
**Aug. 2023** ANTICIPATED NOTIFICATION OF FUNDING SELECTION  
**Dec. 2023** ANTICIPATED AWARD

**APPLICATION SUBMISSION DEADLINE:** Application packages must be submitted electronically to the EPA through Grants.gov ([www.grants.gov](http://www.grants.gov)) no later than **April 4, 2023**, at 11:59 p.m. (ET) to be considered for funding.

**Note** - Prior to naming a contractor (including consultants) or subrecipient in your application as a "partner", please carefully review Appendix A of [EPA's Contracts and Subawards Solicitation Clause](#) that are incorporated by reference in this announcement (refer to *Section III.D: Named Contractors and Subrecipients*). EPA expects recipients of funding to comply with competitive procurement contracting requirements as well as EPA's rule on Participation by Disadvantaged Business Enterprises in EPA Programs in 40 CFR Part 33. The Agency does not accept justifications for sole source contracts for services or products available in the commercial marketplace based on a contractor's role in preparing an application or prior relationships with the contractor that were not established in compliance with competitive procurement requirements. Note that these competitive procurement requirements apply with equal force to contractual relationships established prior to or after the award of EPA funds.

There is no cost match required for this funding opportunity.

For the Purpose of  
today's webinar, I will  
be using the SWIRF  
Grant & Solid waste as  
the example.





# Example of Anticipated Output/Outcome

Activity Funded	Output/Outcome
Purchase, develop or enhance infrastructure; develop or enhance markets	<ul style="list-style-type: none"><li>• Number of infrastructure investments/enhancements made spanning the spectrum of collection through end market development (e.g., bins purchased, post-consumer materials management systems created, technology improvements made).</li><li>• Tons of MSW/C&amp;D collected, recycled, or composted, or managed via other management pathways in the community in which the project serves.</li><li>• Tons of MSW/C&amp;D generated per material type and source in the community in which the project serves (e.g., plastic and food waste).</li><li>• Number of temporary or permanent jobs created (including part-time).</li></ul>

# Example of Anticipated Output/Outcome

Activity Funded	Output/Outcome
Establish, increase, expand, or optimize collection	<ul style="list-style-type: none"><li>• Tons of MSW/C&amp;D collected, recycled, or composted, or managed via other management pathways in the community in which the project serves.</li><li>• Tons of MSW/C&amp;D generated per material type and source in the community in which the project serves (e.g., plastic and food waste).</li><li>• GHG reduced (in MTCO<sub>2</sub>e) from collection, recycling, composting or management via other management pathways</li><li>• Number of temporary or permanent jobs created.</li><li>• Percentage of tribes and tribal members of intertribal consortia served as a result of establishing, increasing, expanding, or optimizing collection.</li><li>• Number of tribes and member tribes of intertribal consortia served as a result of establishing, increasing, expanding, or optimizing collection.</li></ul>

Keep in Mind that including a  
Logic Model can make your  
proposal stronger

...and not all Grant Opportunity may Support a Logic Model.

3.0	<b>Environmental Results—Outcomes, Outputs and Performance Measures (Logic Model)</b> - Under this criterion, applications will be evaluated based on the following elements:		<b>16</b>
a.	Environmental Results- Outputs/Outcomes	<p>Applicants will be evaluated on the quality of the expected project outputs and outcomes identified in the application for their project. The expected outputs and outcomes should be effective in achieving the Program Objectives listed in Section I, including developing strategies for addressing local environmental and public health issues, educating and empowering the community about those issues, and developing approaches to building consensus and setting community priorities in the underserved community.</p> <p>While not required, including a logic model as part of your application package is strongly encouraged. Applicants may</p>	8

**Also tied to your budget**

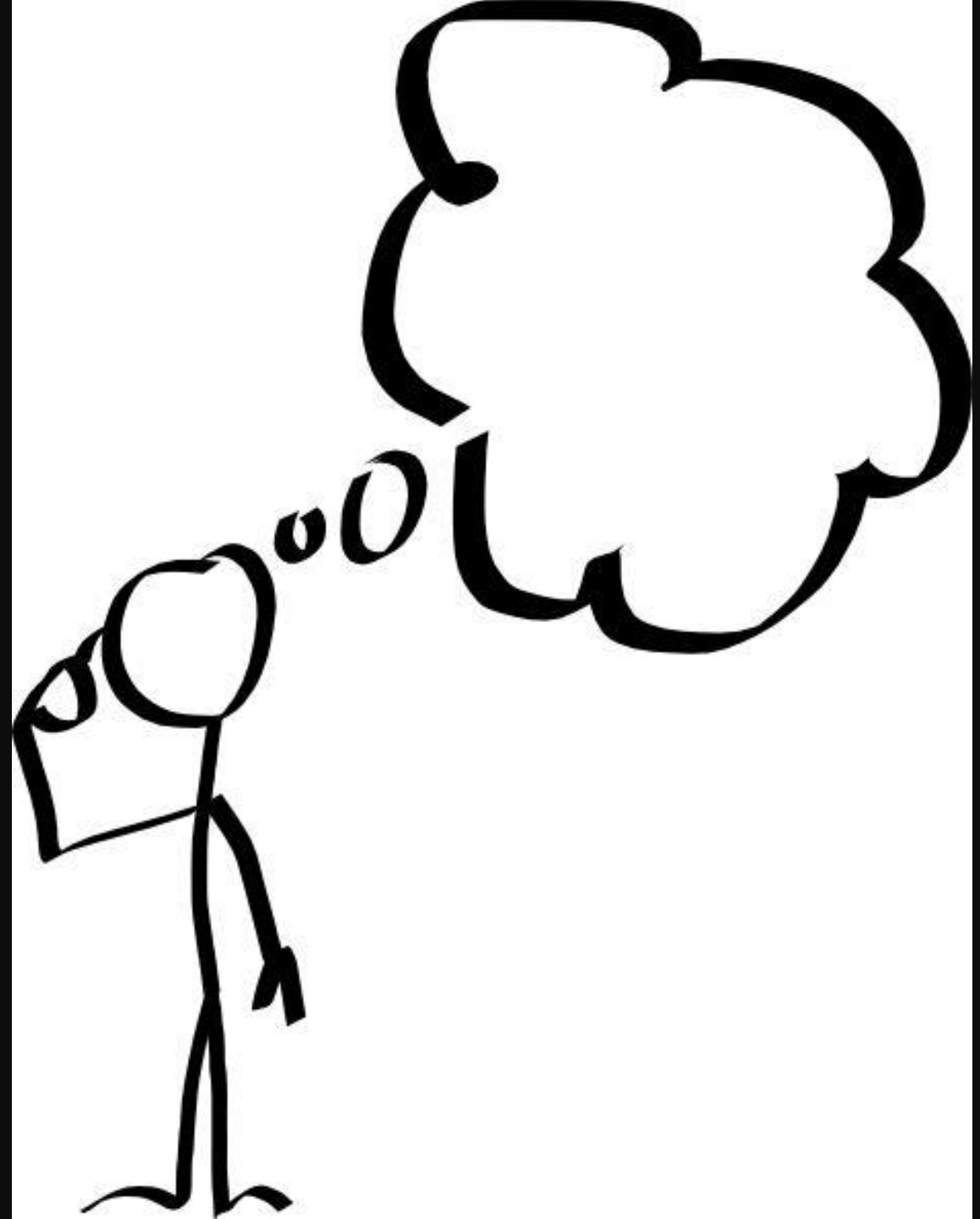
# Why Does a Logic Model Matter?

---

It matters because the logic model serves as a visual tool that helps define a program's goals, intended impact and how to achieve them.

Let's break it down by category.

---





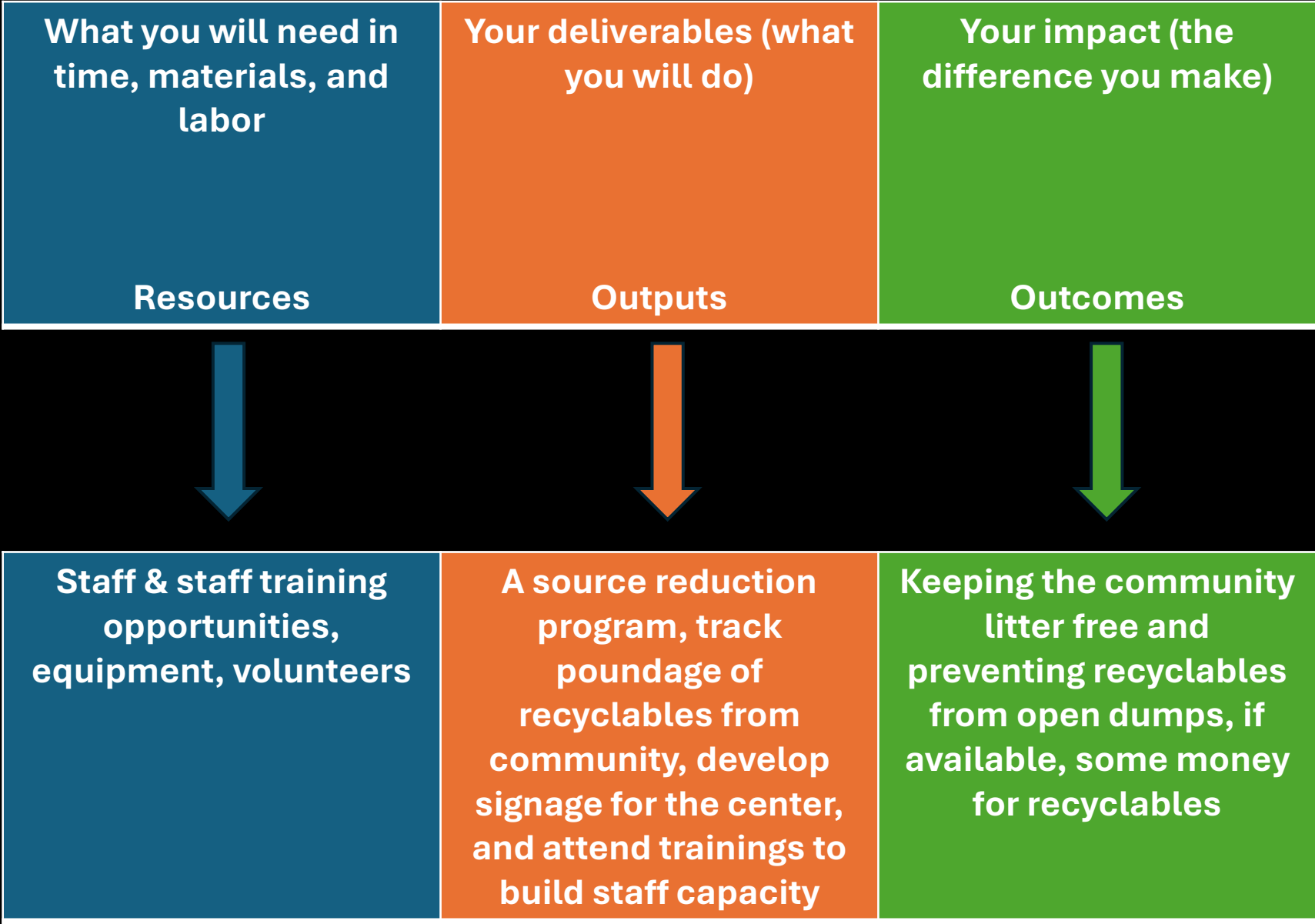
RESOURCES



OUTPUTS



OUTCOMES



# Example from my Experience is improving solid waste & recycling collection systems



Worked 20 years in Tribal Government in Environmental &  
Natural Resources Management







Output – Purchase recycling bins and trailers to make recycling possible & develop signage



Outcome – decrease in number of recyclables going to the landfill & community involvement/participation

# Resources

The project will include 1 staff person, Environmental Technician working at 50% FTE (other 50% paid by another funding source).

The ET is also expected to attend training, at 25% of time, to build capacity for the program.

Equipment needed to implement the project – 1 recycling trailers @ \$15,000.

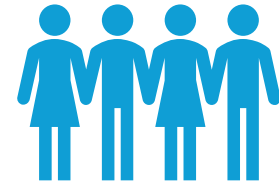
# Outcomes



Paid position to implement the recycling program



Staff builds knowledge and understanding to manage the program



Staff has equipment to enable community participation

# Outputs



Staff tasks and objectives to develop program



Staff attends up to 2 local trainings, and 1 out-of-state training



Staff have a recycling bins & trailer to help program implementation

# Back to the Logic Model

The background of the slide is a dark blue field filled with abstract, colorful elements. It features numerous small blue and green dots scattered across the space. Overlaid on these dots are thin, wavy lines in shades of blue and green. Additionally, there are several overlapping, semi-transparent rectangular outlines in a light blue or green color, some of which are slightly tilted. The overall effect is a complex, layered pattern that suggests a network or a data visualization.

## Logic Model Guide – What each category means

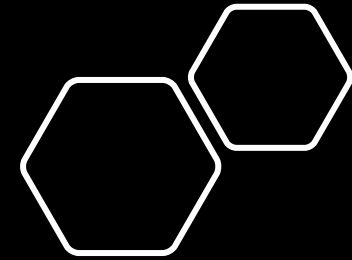
### Inputs



Resources	Activities	Outputs	Audience	Short-Term Outcomes	Intermediate Outcomes	Long-Term Outcomes
<p><i>What you invest!</i></p> <ul style="list-style-type: none"> <li>•Time</li> <li>•Money</li> <li>•Partners</li> <li>•Equipment</li> <li>•Facilities</li> </ul>	<p><i>What you do!</i></p> <ul style="list-style-type: none"> <li>•Plan</li> <li>•Meet</li> <li>•Educate</li> <li>•Create</li> <li>•Clean up</li> </ul>	<p><i>What you produce or deliver! (#)</i></p> <ul style="list-style-type: none"> <li>•Workshops</li> <li>•Events</li> <li>•Publications</li> <li>•Resident involvement</li> </ul>	<p><i>Who you reach!</i></p> <ul style="list-style-type: none"> <li>•Customers</li> <li>•Participants</li> <li>•Decision-makers</li> </ul> <p><b>Define Community</b></p>	<p><i>Change in:</i></p> <ul style="list-style-type: none"> <li>•Knowledge</li> <li>•Skills</li> <li>•Attitude</li> <li>•Awareness</li> <li>•Motivation</li> </ul> <p><b>End of project</b></p>	<p><i>Change in:</i></p> <ul style="list-style-type: none"> <li>•Behaviors</li> <li>•Practices</li> <li>•Procedures</li> </ul> <p><b>6-12 months after project</b></p>	<p><i>Change in:</i></p> <ul style="list-style-type: none"> <li>•Environment</li> <li>•Social conditions</li> <li>•Economic conditions</li> <li>•Policies</li> </ul> <p><b>2+ years after project</b></p>



# Meet *the* Staff



Double-click to hide white space



Loloma (hello)...my name is Cynthia Naha, I am a member of the Hopi Tribe; and am also Tewa and Yankton Sioux out of southeastern South Dakota. I am from the village of Tewa (First Mesa) and am water clan (patki'wungwu) from the village of Mishung'novi (Second Mesa). I graduated from Arizona State University in fall of 2003 in which I earned a Bachelor's of Science degree in American Indian Studies as well as earned an Associate of Arts Degree in 1999 from Northland Pioneer College.

I recently relocated from northern California, where I had lived for the past 5 years working for and with a number of Pomo, Yurok, Hupa, Karuk, Miwok and other Tribes; plus 2 years in eastern California working for the Paiute and Shoshone peoples of the Owens Valley. I have been working in the Tribal environmental field for about 10 years now, in the areas of solid waste, hazardous waste, emergency response and preparedness, water quality monitoring and sampling, climate change, youth program development, grant writing and more. I have also done volunteer work at the grassroots level with several Indigenous non-profit organizations on issues surrounding environmental justice, Indigenous Human Rights, climate justice, the United Nation Declaration on Indigenous Human Rights (UNDRIP) and more.





**Staff  
Training**

INSTITUTE FOR TRIBAL ENVIRONMENTAL PROFESSIONALS  
TRIBAL SOLID WASTE EDUCATION AND ASSISTANCE PROGRAM

**Recycling Strategies for Tribes**

Pensacola, Florida  
December 1-3, 2015

Tuesday, December 1

- 8:30 – 9:45 am Introductions and Discussion of Participant's Issues
- Name, Title, Tribe and Location
  - Where are you at with your recycling program, what challenges are you facing, and where do you want to go?
- 9:45 am – 10:30 pm Session 1: Tribal Profiles of the Poarch Band of Creek Indians and Colville Confederated Tribes  
Instructors: Joaquin Bustamante, Colville Confederated Tribes; Ralph McCullers and Tiffany Janes, Poarch Band of Creek Indians
- 10:30 am – 12:00 pm Session 2: Initial Steps - Getting Your Program Off the Ground  
Instructors: Joaquin Bustamante, Colville Confederated Tribes; Ralph McCullers and Tiffany Janes, Poarch Band of Creek Indians
- How recycling can benefit your community and your solid waste program
  - Identifying what to recycle and setting recycling goals and priorities

- 12:00 – 1:00 pm Lunch (on your own)
- 1:00 – 3:30 pm Session 3: Keys to Success – Effective Program Management  
Instructors: Joaquin Bustamante, Colville Confederated Tribes; Ralph McCullers and Tiffany Janes, Poarch Band of Creek Indians
- Selecting the right kind/size of program for your community
  - Site selection and types of facilities
  - Staff needs and training, including safety issues
  - What do you want to accept?
  - How to deal with suppliers and vendors
  - Strategies for dealing with special and dangerous materials
  - Equipment, storage and shipping issues
  - Understanding and using the markets – including seasonal fluctuations
- 3:30 - 4:15 pm Small Group Activity - Identifying Your Recyclables and Conducting Market Research
- 4:15 – 4:45 pm Small Groups Report Back to Class
- 4:45 – 5:00 pm Reflective Writing Exercise





Program  
Implementation  
with Equipment  
Purchased







## Short-term Outcomes/Impacts

The community members have a place to take recyclables and can participate in the program, which builds capacity

Staff gain necessary knowledge through trainings to develop and manage the program

Community members, all ages, recognize the recycling trailers, and know how to recycle



# Intermediate-term Outcomes/Impacts

The community members continue to recycle and increase the program's ability to serve.

Staff gain necessary knowledge through trainings to develop and manage the program

Community members, all ages, recognize the recycling trailers, and know how to recycle



## Long-term Outcomes/Impacts (1+ years)

The Recycling Program/Center has been established and is being used

Staff continues to build capacity to manage the program/center

Additional recycling trailers purchased to increase collection capability



# Another Way Logic Models Can Be Used

Gathering Stakeholder/Rightsholder  
information and understanding  
community needs



# The Logic Model and Your Community



Additional Information  
Change through various examples  
by the language  
to describe & simplify  
to get  
to help learning

Thank you

KEWA  
Feb 16  
2020

# Concrete measurable, and mutually accepted objectives

- + •
- 

Remember, A logic model can be used to help community stakeholders reach consensus on a decision by focusing on



# Logic Models Can

- Help stakeholders assess how well a project's outcomes meet its objectives
- Factor analysis can help stakeholders understand if evaluation instruments, like surveys, are adequately assessing program effectiveness
- Can also help stakeholders focus on objectives that are concrete measurable and mutually accepted.



Remember...a good logic model should convey its information on a single page.



It's intended to be a quick snapshot!

## Logic Model Guide – What each category means

Resources	Activities	Outputs	Audience	Short-Term Outcomes	Intermediate Outcomes	Long-Term Outcomes
<p><i>What you invest!</i></p> <ul style="list-style-type: none"> <li>•Time</li> <li>•Money</li> <li>•Partners</li> <li>•Equipment</li> <li>•Facilities</li> </ul>	<p><i>What you do!</i></p> <ul style="list-style-type: none"> <li>•Plan</li> <li>•Meet</li> <li>•Educate</li> <li>•Create</li> <li>•Clean up</li> </ul>	<p><i>What you produce or deliver! (#)</i></p> <ul style="list-style-type: none"> <li>•Workshops</li> <li>•Events</li> <li>•Publications</li> <li>•Resident involvement</li> </ul>	<p><i>Who you reach!</i></p> <ul style="list-style-type: none"> <li>•Customers</li> <li>•Participants</li> <li>•Decision-makers</li> </ul> <p><b>Define Community</b></p>	<p><i>Change in:</i></p> <ul style="list-style-type: none"> <li>•Knowledge</li> <li>•Skills</li> <li>•Attitude</li> <li>•Awareness</li> <li>•Motivation</li> </ul> <p><b>End of project</b></p>	<p><i>Change in:</i></p> <ul style="list-style-type: none"> <li>•Behaviors</li> <li>•Practices</li> <li>•Procedures</li> </ul> <p><b>6-12 months after project</b></p>	<p><i>Change in:</i></p> <ul style="list-style-type: none"> <li>•Environment</li> <li>•Social conditions</li> <li>•Economic conditions</li> <li>•Policies</li> </ul> <p><b>1+ years after project</b></p>



# What are the needs of the Tribe?

- Wastewater
- Drinking water
- Water Quality
- Climate Adaptation
- Solid Waste
- Other needs?



- +
- 
- 

# Questions?