



Smart Management for
Small Water Systems

Rates Dashboard: Benchmarking Water and Wastewater Rates in Illinois



UNC
ENVIRONMENTAL
FINANCE CENTER

This program is made possible under a
cooperative agreement with EPA.



www.efcnetwork.org



UNC
ENVIRONMENTAL FINANCE CENTER



Rates in Illinois

2013 Water and Wastewater Residential Rates Survey of Northeastern Illinois (IISG-15-007)

- Conducted by Margaret Schneemann and others at the Illinois-Indiana Sea Grant Program for municipal utilities in the seven-county Chicago Metropolitan area (Cook, DuPage, Kane, Kendall, Lake, McHenry, and Will).
- The rates survey includes residential water and/or wastewater rate structures effective as of October 1, 2013, for 224 municipal public utilities in the state of Illinois.



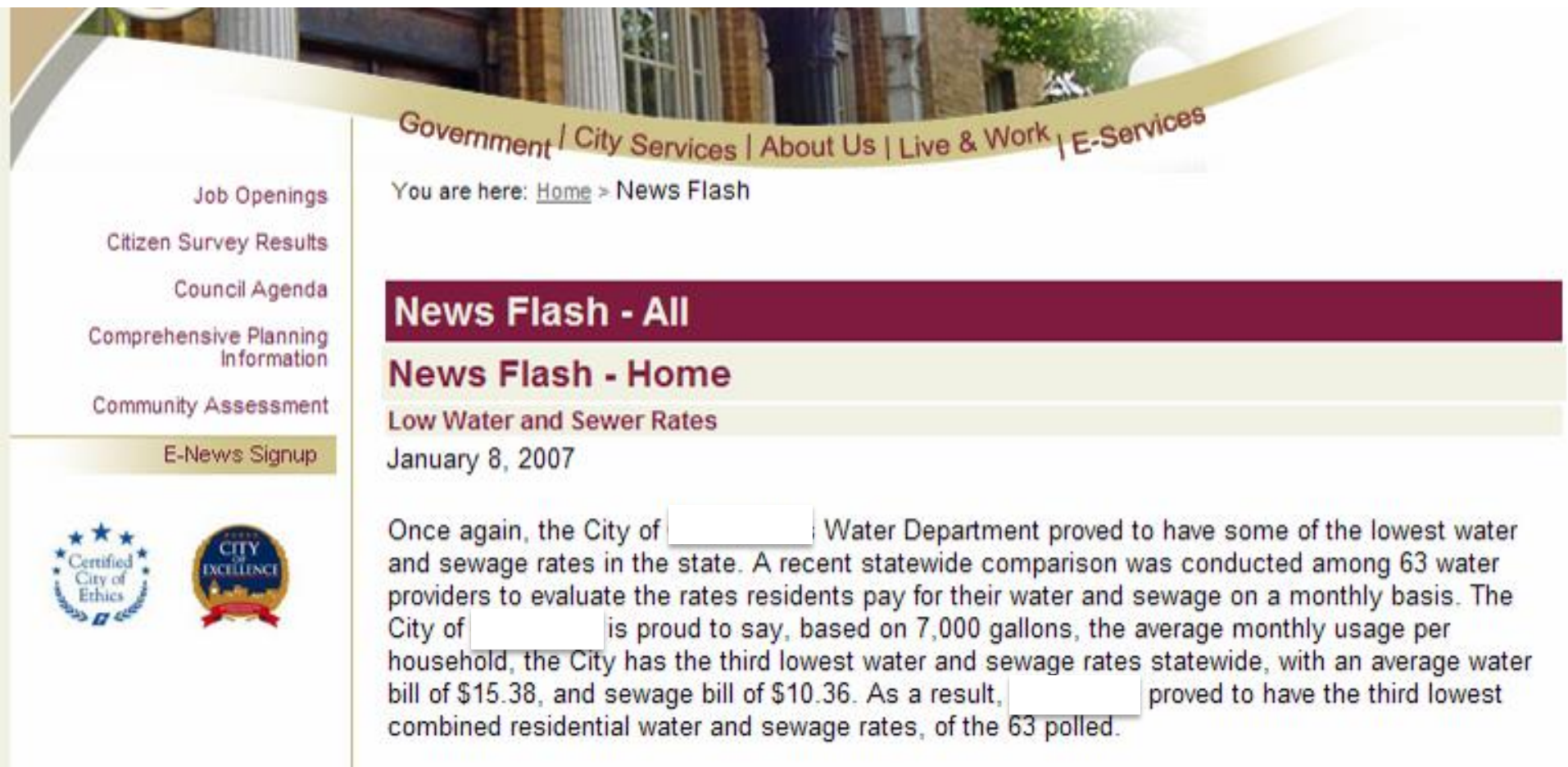
Rates in Illinois

2013 Water and Wastewater Residential Rates Survey of Northeastern Illinois (IISG-15-007)

- This Rates Dashboard was constructed as part of the Smart Management for Small Water Systems nationwide project of the Environmental Finance Center Network (EFCN). This dashboard was created under a cooperative agreement with the United States Environmental Protection Agency.
- No statewide (all counties) rate survey has been identified at this time.



Source of pride?



Government | City Services | About Us | Live & Work | E-Services

You are here: [Home](#) > News Flash

News Flash - All



News Flash - Home

Low Water and Sewer Rates

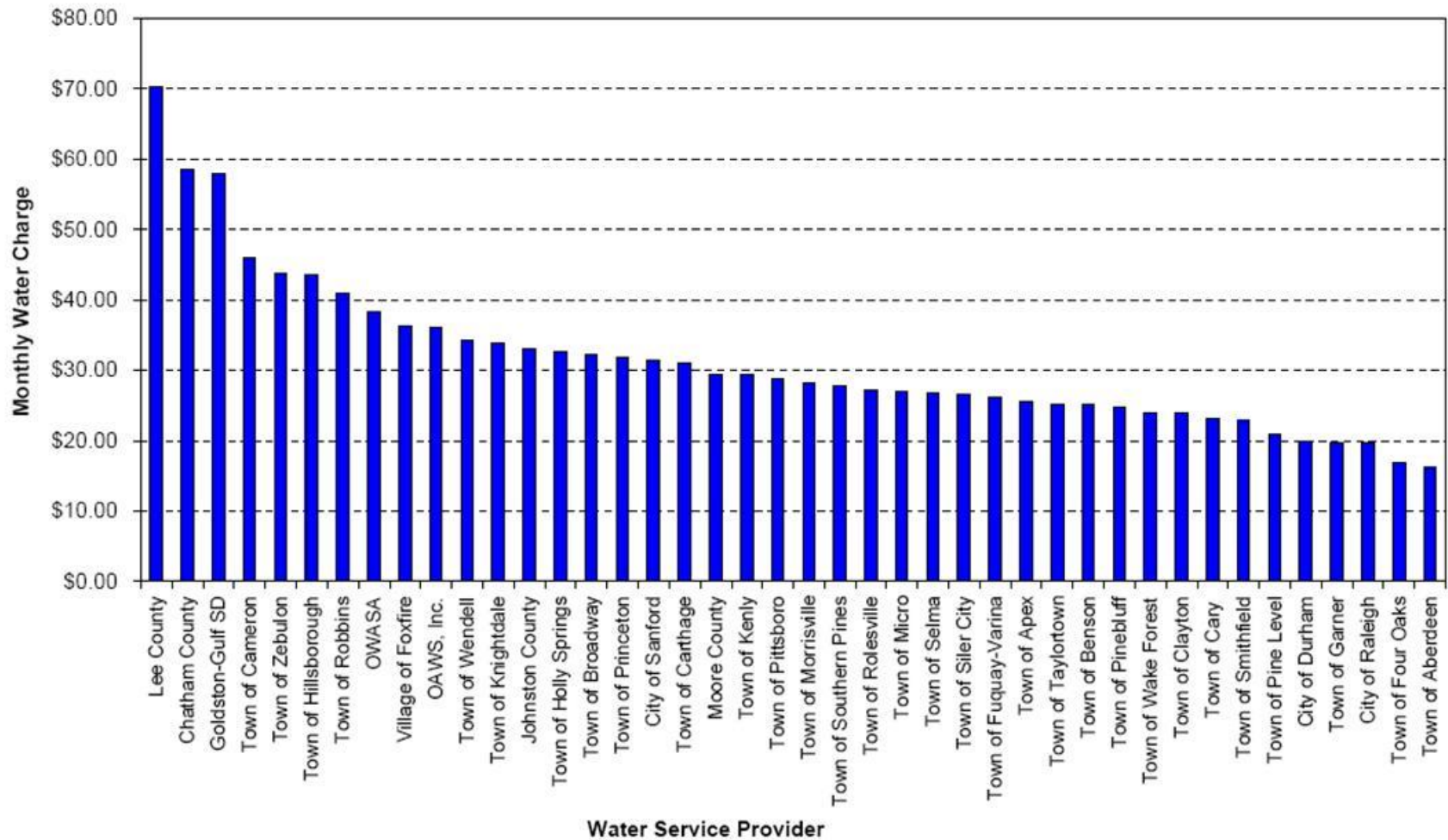
January 8, 2007

Once again, the City of [redacted] Water Department proved to have some of the lowest water and sewage rates in the state. A recent statewide comparison was conducted among 63 water providers to evaluate the rates residents pay for their water and sewage on a monthly basis. The City of [redacted] is proud to say, based on 7,000 gallons, the average monthly usage per household, the City has the third lowest water and sewage rates statewide, with an average water bill of \$15.38, and sewage bill of \$10.36. As a result, [redacted] proved to have the third lowest combined residential water and sewage rates, of the 63 polled.

Job Openings
Citizen Survey Results
Council Agenda
Comprehensive Planning Information
Community Assessment
E-News Signup

Comparing Rates – The Old Way



Source: NC Triangle J Council of Government



What's wrong with it?

- Poor sample selection (number, types of systems)
- Comparing only one bill amount
- Comparing nothing besides rates
 - pressure to keep rates low ...
 - ... regardless of financial condition of utility
 - ignores customers' ability to pay
 - ignores price signals and utility's policies

Utility / Rate Structure	Service Population	Billing Period	Base Charge Pricing	Monthly Gallons Provided with Base Charge (Allowance)	Water Rate Structure	Number of Blocks	First Block Maximum (Monthly Gallons)	Implied Rate Structure for Residential Usage (< 15,000 GPM)	Outside/Inside Bill Differential at 5,000 Gallons
Aberdeen	5,455 [†]	Bi-monthly	Constant	0	Increasing Block	5	2,500	Increasing Block	188%
Ahoskie	4,479 [†]	Monthly	Constant	0	Uniform Rate			Uniform Rate	200%
Alamance	800 [†]	Bi-monthly	Constant	0	Uniform Rate			Uniform Rate	
Albemarle	16,042 [†]	Monthly	Constant	2,244	Decreasing Block	3	224,400	Implied Uniform Rate	200%
Alexander County - Bethlehem	10,917 [†]	Monthly	By Meter Size	0	Uniform Rate			Uniform Rate	

Compare with caution. High rates may be justified and necessary to protect public health.

Rate Table 2: FY09-10 Monthly-Equivalent RESIDENTIAL WATER BILLS at Various Consumption Levels (Includes Base Charges)

Utility / Rate Structure	Service Population	Oper. Revenue/ Oper. Expense (FY09 LGC Data)	Zero Gallons (0 cf)		3,000 Gallons (401 cf)		5,000 Gallons (668 cf)		6,000 Gallons (802 cf)		10,000 Gallons (1,337 cf)		15,000 Gallons (2,005 cf)	
			Inside	Outside	Inside	Outside	Inside	Outside	Inside	Outside	Inside	Outside	Inside	Outside
Aberdeen	5,455 [†]	0.81	\$5.00	\$8.00	\$11.82	\$21.65	\$16.62	\$31.25	\$19.17	\$36.35	\$29.75	\$57.49	\$45.49	\$88.99
Asheboro	4,479 [†]	1.50	\$10.00	\$20.00	\$20.95	\$41.90	\$28.25	\$56.50	\$31.90	\$63.80	\$46.50	\$93.00	\$64.75	\$129.50
Asheville	800 [†]	0.73	\$8.50		\$19.27		\$26.45		\$30.04		\$44.40		\$62.35	
Atlantic Beach	16,042 [†]	0.87	\$9.49	\$18.97	\$11.31	\$22.60	\$16.12	\$32.23	\$18.53	\$37.04	\$28.15	\$56.29	\$40.18	\$80.36
Aulander	10,917 [†]	1.16	\$27.92		\$32.09		\$34.87						\$3.78	
Aurora	10,917 [†]	1.16	\$19.44		\$29.66		\$36.47						\$5.52	
Autryville	2,285 [†]	0.87	\$14.30	\$40.70	\$14.30	\$40.70	\$19.03	\$46.33					\$7.43	\$83.83
Ayden								\$39.30					\$6.80	\$92.30
Bailey													\$4.89	
Bakersville													\$3.67	
Bald Head Island													\$7.34	\$114.68
Banner Elk								\$44.28					\$1.25	\$122.50
Bath								\$47.50					\$4.24	\$135.70
Baton Water Corporation								\$51.74					\$3.63	
Bay River Metropolitan S													\$3.35	
Beaufort													\$7.28	\$25.06
Beaufort County - District													\$3.65	\$107.40
Beaufort County - District													\$3.50	\$124.38
Beaufort County - District	375 [†]	1.02	\$19.00	\$23.75	\$30.50	\$38.13	\$42.00	\$52.50					\$3.74	\$115.74
Beaufort County - District	5,629 [†]	1.11	\$11.00	\$22.00	\$23.75	\$37.75	\$32.25	\$48.25					\$7.95	\$75.90
Beaufort County - District	850 [†]	0.88	\$16.50	\$33.00	\$20.79	\$41.58	\$23.65	\$47.30					\$7.00	\$48.00
Beaufort County - District	737 [†]	0.63	\$16.00	\$26.00	\$16.00	\$26.00	\$17.00	\$28.00					\$6.47	
Beaufort County - District	2,806 [†]	1.28	\$17.67		\$32.64		\$48.27						\$6.89	\$121.78
Bald Head Island														
Banner Elk	1,407 [†]	0.76	\$12.60	\$25.20	\$16.20	\$32.39	\$23.89	\$47.78						
Bath	290 [†]	1.17	\$27.50		\$37.50		\$57.50		\$67.50		\$107.50		\$157.50	
Baton Water Corporation	6,720 [†]		\$13.65		\$13.65		\$21.29		\$25.11		\$40.39		\$58.43	
Bay River Metropolitan Sewerage District	2,285 [†]	1.24												

Service Pop.: [†]=EPA SDWIS, [‡]=sewer accounts, 6=Water

[illegible]

Service Pop.: 1=EPA SDWIS,
2=sewer accounts, 6=Water



Water Rates Dashboards

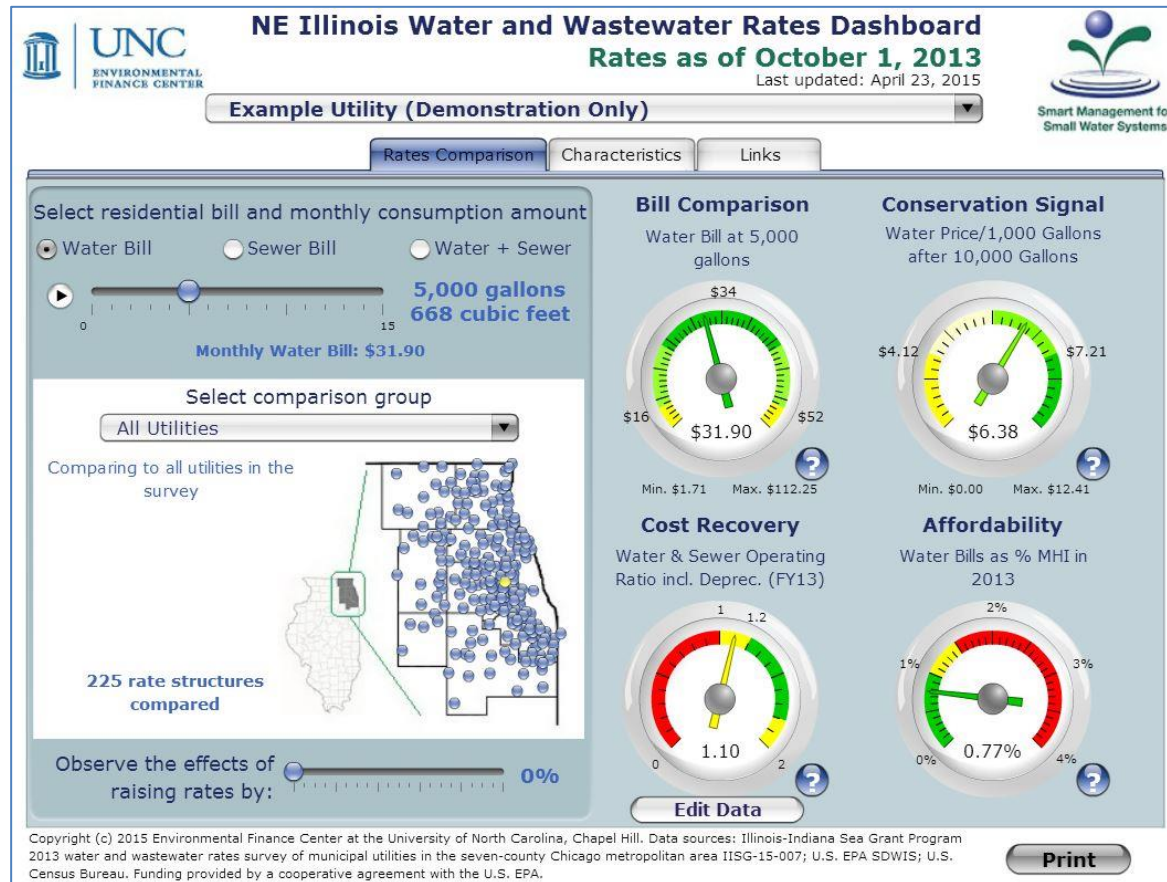
- Created for AL, AZ, CO, GA, IL, MA, NC, OH, SC, TX, VA, WI and Canada. More coming soon!
- Free, online, open to the public.
- Compares rates against multiple characteristics:
Utility finances; System characteristics; Customer base socioeconomic conditions; Geography; History
- Compare to similar utilities (large samples):
 - All utilities; similar service population; similar water source; using same rate structure; similar customer income; same type of utility; within 50 miles distance



Everyone needs safe drinking water!



Northeast Illinois Water and Wastewater Rates Dashboard



<http://www.efc.sog.unc.edu/reslib/item/northeast-illinois-water-and-wastewater-rates-dashboard>



Questions?